

Product Information Bulletin

1,2 BIS (DIPHENYLPHOSPHINO) ETHANE

Abbreviation:

DPPE

Description:

White solid.

Empirical Formula:

C₂₆H₂₄P₂

CAS Registry Number:

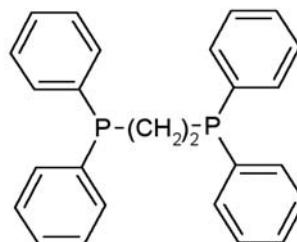
001663-45-2

HS Tariff Number:

2931.00

Molecular Weight:

398.43

Structure:**Chemical Properties:**

Reacts readily with oxygen to form the phosphine oxide. Incompatible with strong oxidizers. Forms complexes with metal ions. Forms quaternary phosphonium salts with alkylating agents.

Availability:

Developmental Quantities.

Specifications:

Assay:	96% minimum
--------	-------------

Physical Properties:

Melting Point:	282 - 286°F/139 - 141°C
Solubility:	Soluble in many organic solvents.

For Additional Information and Handling Instructions Read Cytec Industries Inc. Material Safety Data Sheet.

IMPORTANT NOTICE

The information and statements herein are believed to be reliable but are not to be construed as a warranty or representation for which we assume legal responsibility or as an assumption of a duty on our part. Users should undertake sufficient verification and testing to determine the suitability for their own particular purpose of any information, products or vendors referred to herein. NO WARRANTY OF FITNESS FOR A PARTICULAR PURPOSE IS MADE. Nothing herein is to be taken as permission, inducement or recommendation to practice any patented invention without a license.

CYTEC

Technology ahead of its time®

• **Canada** - Cytec Canada Inc., Niagara Falls, Ontario, 1-905-356-9000 • **Europe** - Cytec Industries France S.A.R.L., Rungis-Cedex, 33-1-41-80-17-00
• **United States** - Cytec Industries Inc., West Paterson, NJ, 1-973-357-3100 • **Asia/Pacific** - Cytec Australia Holdings Pty. Ltd., Baulkham Hills, NSW, 61-2-9846-6200.