

Product Information Bulletin

TRI (ORTHOTOLYL) PHOSPHINE

Code 21869

Synonyms:

Tris (2-methylphenyl) phosphine

Abbreviation:

TOTP

Description:

White to off-white powder.

Empirical Formula:

$C_{21}H_{21}P$

CAS Registry Number:

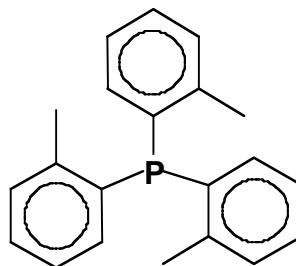
6163-58-2

HS Tariff Number:

2931.00.6000

Molecular Weight:

304.39

Structure:**Chemical Properties:**

Reacts with oxygen to form the phosphine oxide. Incompatible with strong oxidizers. Forms complexes with metal ions.

Availability:

Commercial Quantities.

Specifications:

Assay (GC):	98% min.
-------------	----------

Physical Properties:

Melting Point:	124°C/255°F
Solubility:	Soluble in most organic solvents. Insoluble in water.

For Additional Information and Handling Instructions Read Cytec Industries Inc. Material Safety Data Sheet.

IMPORTANT NOTICE

The information and statements herein are believed to be reliable but are not to be construed as a warranty or representation for which we assume legal responsibility or as an assumption of a duty on our part. Users should undertake sufficient verification and testing to determine the suitability for their own particular purpose of any information, products or vendors referred to herein. NO WARRANTY OF FITNESS FOR A PARTICULAR PURPOSE IS MADE. Nothing herein is to be taken as permission, inducement or recommendation to practice any patented invention without a license.

CYTEC

Technology ahead of its time®

• **Canada** - Cytec Canada Inc., Niagara Falls, Ontario, 1-905-356-9000 • **Europe** - Cytec Industries France S.A.R.L., Rungis-Cedex, 33-1-41-80-17-00
• **United States** - Cytec Industries Inc., West Paterson, NJ, 1-973-357-3100 • **Asia/Pacific** - Cytec Australia Holdings Pty. Ltd., Baulkham Hills, NSW, 61-2-9846-6200.